

## Homay Chi - Filter replacement:

1) Turn off water supply.

2) Open filter compartment door, see image 1:

Looking from the front, the latch to open the filter door is placed on the right hand side.

Swing door open to the back, then remove door temporarily.

Take out the current filter, by pushing the filter down and pulling it out.

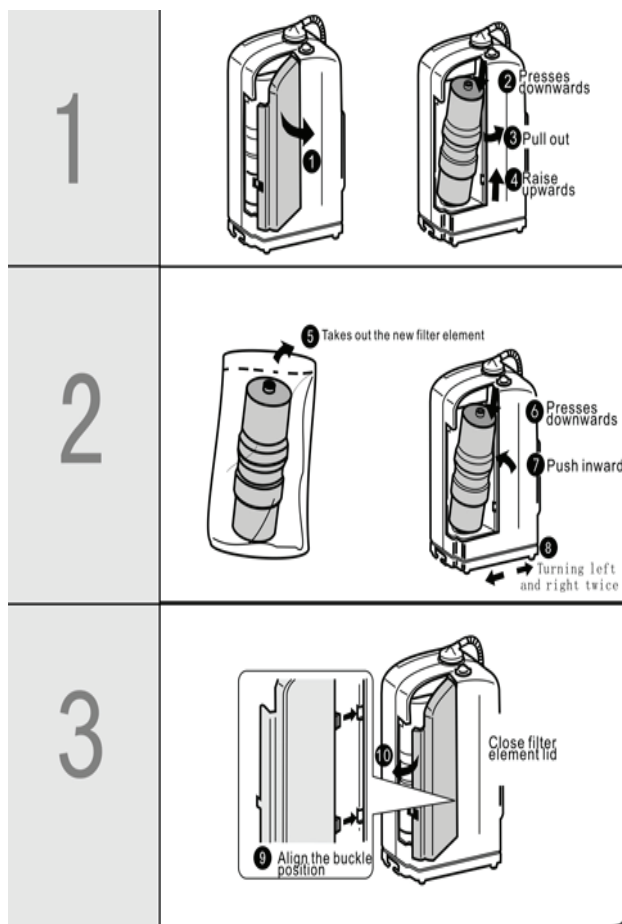


Image 1



Image 2

3) Then reset the counter by pushing the button. (see image 2)

A beep sound indicates that the counter is reset, and in the display you will see that the counter is now set to the beginning. (Please note: the new generation filters now offer 5000liters capacity or 18 months, with a total maximum of 24 months lifespan. If the filter has used more than 5000liters in less than 24 months, then it needs replacement. The same goes with the prefilters. and the Bio-remineraliser).

4) Place new filter by aligning it with the filter bottom base of the ionizer first, pushing the cartridge down, and then aligning it with the top outlet. Once placed in the ports, turn filter to make sure that it is properly sealed with the ports. Then close filter door.

5) Flush Water ionizer for 10minutes. Ready to go then.

Any need for personal assistance, contact us : Ionza Ltd Ph 035257911 [www.ionza.co.nz](http://www.ionza.co.nz)